

**COMMERCIAL PROPERTY ON THE
OUTSKIRTS OF BAD ISCHL (408/00213)**

New, purpose built commercial properties on the outskirts of Bad Ischl. Each unit has truck access and individual entrance door. Each unit comprises storage area and office area. The building has underfloor heating to office areas and will be handed over ready for occupancy. Internal fitting is not included in the rental price.

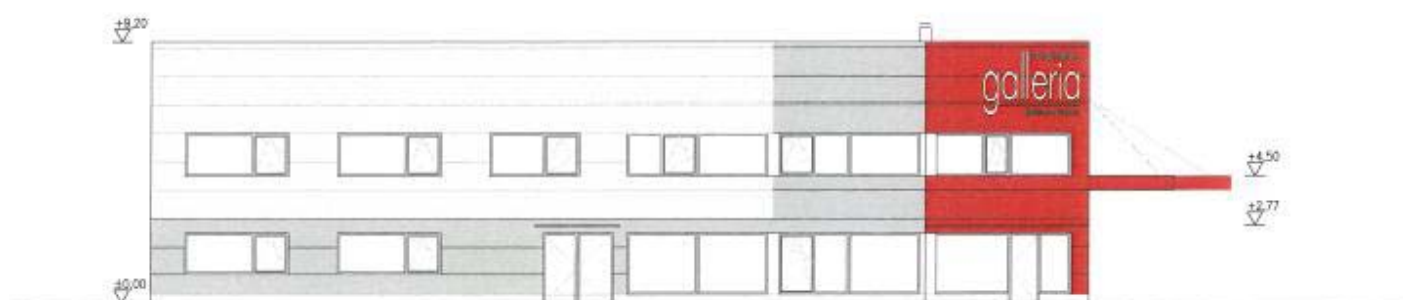
The properties have good access to the the main road to Salzburg.

Floor space storage area: starting from about 180 sq m

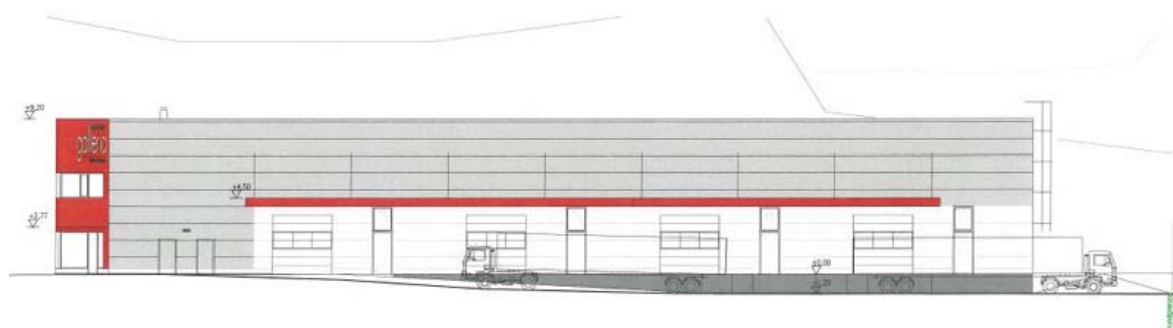
Monthly rent: €4,99/sq m excl. VAT and maintenance costs

Floor space office: starting from about 75 sq m

Monthly rent: €5,99/sq m excl. VAT and maintenance costs



South elevation



East elevation

All details provided are correct to the best of our knowledge. No responsibility is taken for the accuracy of the information. In the event of renting this property we will charge, as commission, an amount equivalent to 2 gross monthly rents plus 20 % VAT. All costs, charges and information relating to the letting will be confirmed in writing. Jurisdiction is Bad Ischl, Austria

